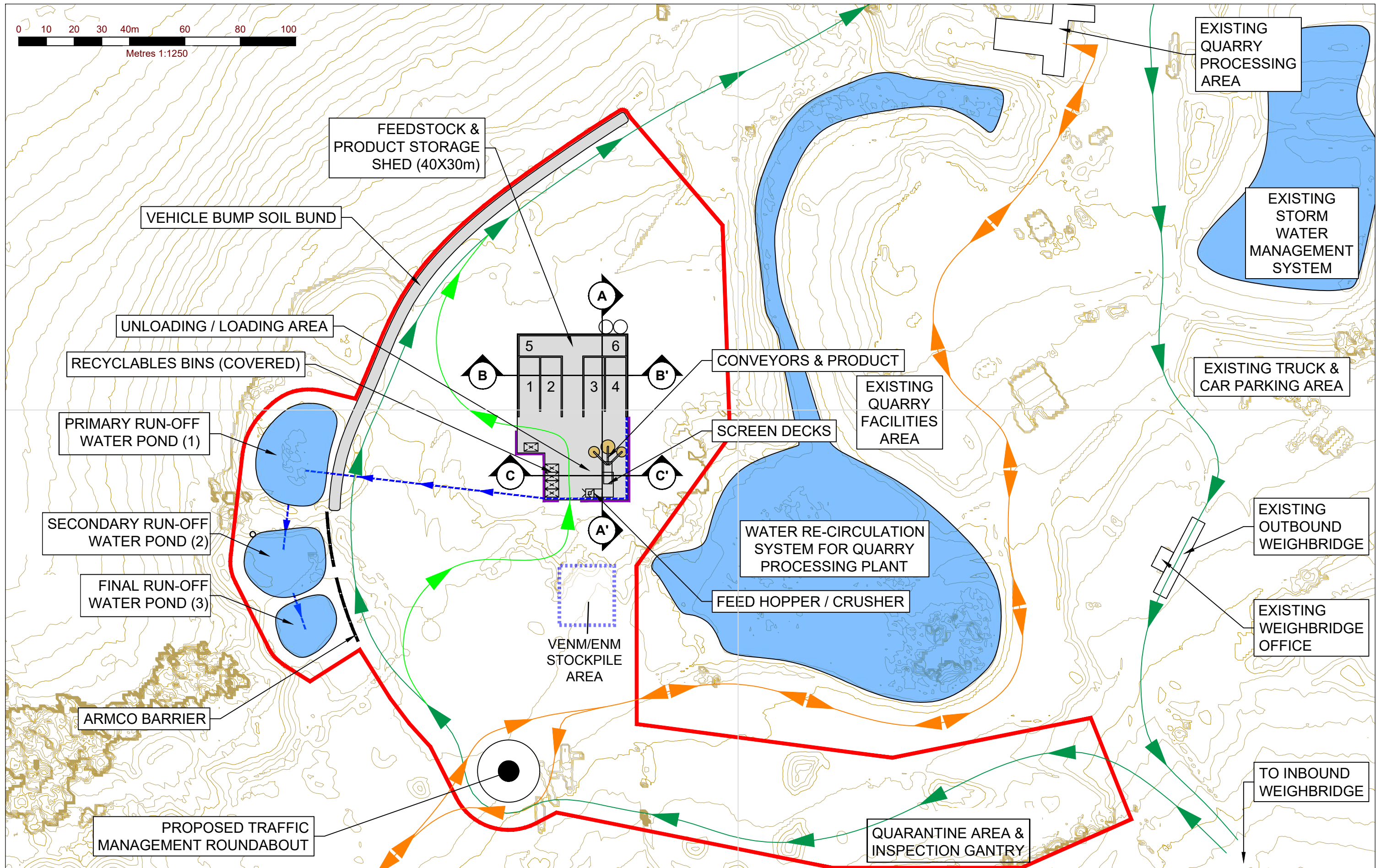




<p>Revision</p> <table border="1"> <thead> <tr> <th>REV</th> <th>DESCRIPTION</th> <th>DATE</th> <th>BY</th> </tr> </thead> <tbody> <tr> <td>1</td> <td>Initial Survey</td> <td>2021-10-08</td> <td></td> </tr> </tbody> </table> <p><small>Thorley Sands is a private property and the information contained herein is for the use of the client only. It is not to be used for any other purpose without the written consent of In Situ Advisory.</small></p>	REV	DESCRIPTION	DATE	BY	1	Initial Survey	2021-10-08		<p>Legend:</p> <ul style="list-style-type: none"> Site Boundary Cadastral Boundary Easement 	<p>PROJECT: Thorley Sands</p> <p>CLIENT: In Situ Advisory</p>	<p>TITLE: Orthophoto: UAV 2021-Oct-08</p> <p>GROUNDWORK</p> <p>Scale: 1:8000</p> <p>Map File: 002A</p> <p>DATE: 2021-10-08</p> <p>PRINTED: 2021-10-08</p> <p>STATUS: DRAFT</p> <p>Scale: 1:8000</p> <p>Map File: 002A</p> <p>DATE: 2021-10-08</p> <p>PRINTED: 2021-10-08</p> <p>STATUS: DRAFT</p>
REV	DESCRIPTION	DATE	BY								
1	Initial Survey	2021-10-08									



LEGEND

- EXTENT OF PROPOSED DEVELOPMENT
- ONE WAY VEHICLE FLOW DIRECTION FOR QUARRY & RRF VEHICLES

- QUARRY VEHICLE ROUTE
- RRF TRAFFIC ACCESS

- EXTENT OF CONCRETE SURFACING (AREA = 2230m² APPROX)
- SUB-SURFACE GREY WATER DRAINS

- KERB EDGING

CLIENT:

THORLEY QUARRY PRODUCTS

SITE:

THORLEY SANDS QUARRY

TITLE:

PROPOSED RRF OPERATIONAL LAYOUT

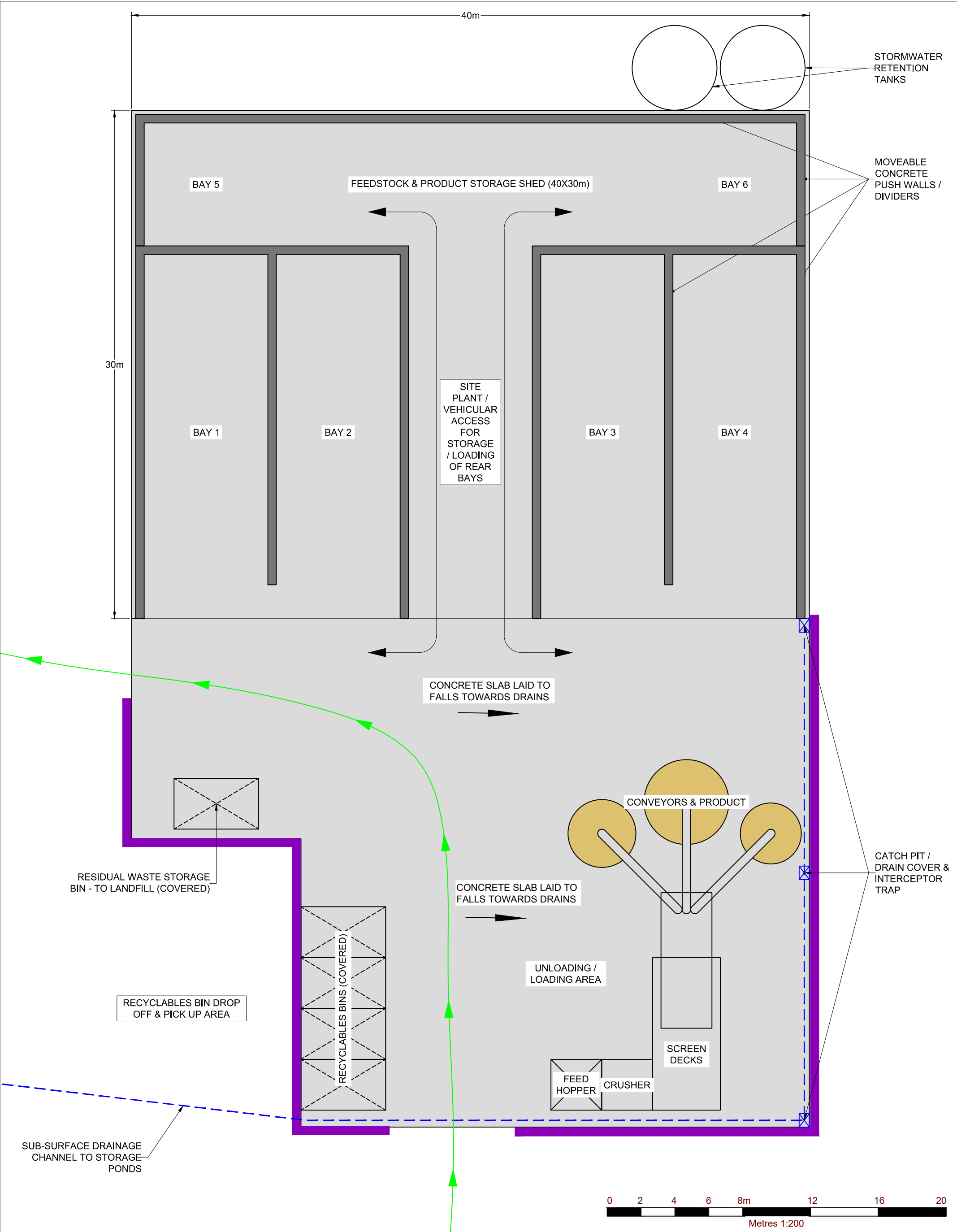
DATE: 15.07.2021

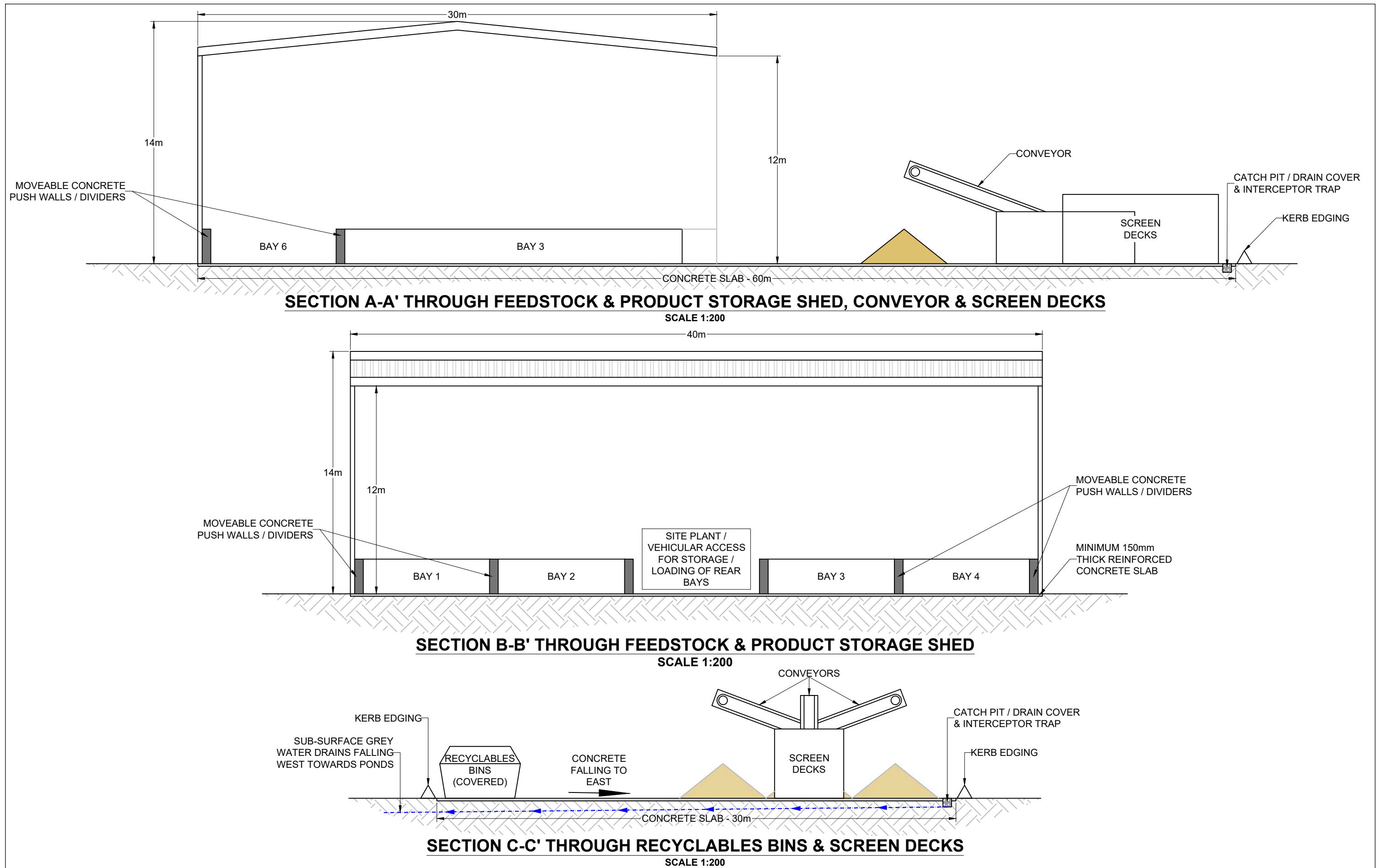
SCALE: 1:1250

PAPERSIZE: A3


DWG: FIGURE 5

THIS DRAWING AND ITS CONTENTS ARE CONFIDENTIAL, ARE SUBJECT TO RETURN ON DEMAND AND MAY NOT BE COPIED OR DISCLOSED TO ANY THIRD PARTY OR USED DIRECTLY OR INDIRECTLY FOR ANY OTHER PURPOSE THAN AS EXPRESSLY DETERMINED IN WRITING BY INSITU ADVISORY PTY LTD.





LEGEND

 EXTENT OF CONCRETE SURFACING
(AREA = 2230m² APPROX)

CLIENT:

THORLEY QUARRY PRODUCTS

SITE:

THORLEY SANDS QUARRY

TITLE:

CROSS SECTION DETAILS - PROPOSED RRF

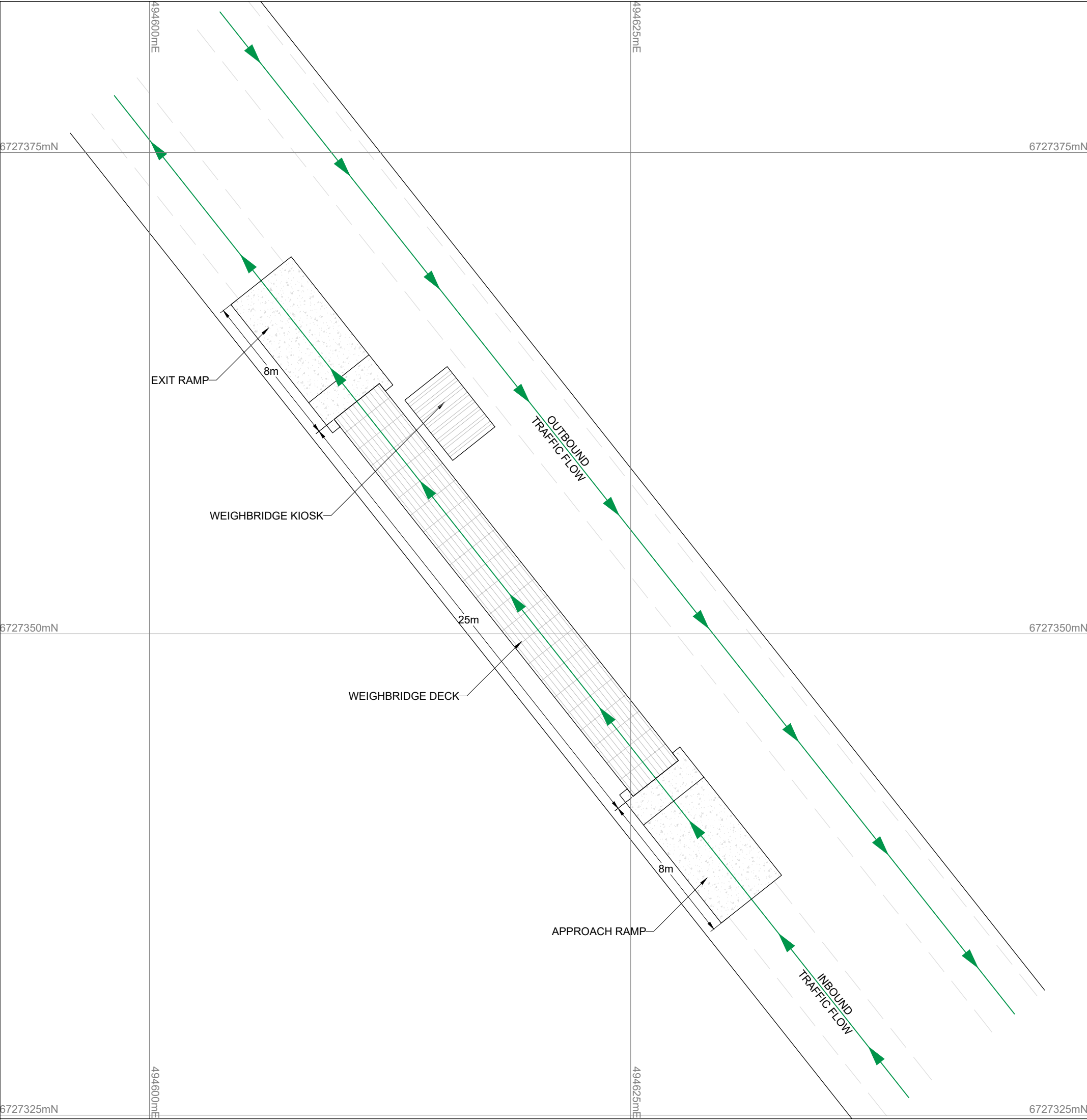
DATE: 15.07.2021

SCALE: 1:200

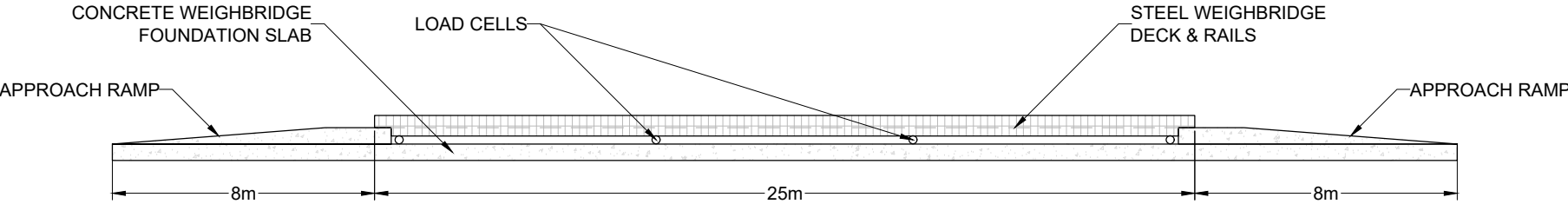
PAPERSIZE: A3

DWG: FIGURE 7

THIS DRAWING AND ITS CONTENTS ARE CONFIDENTIAL, ARE SUBJECT TO RETURN ON DEMAND AND MAY NOT BE COPIED OR DISCLOSED TO ANY THIRD PARTY OR USED DIRECTLY OR INDIRECTLY FOR ANY OTHER PURPOSE THAN AS EXPRESSLY DETERMINED IN WRITING BY INSITU ADVISORY PTY LTD.



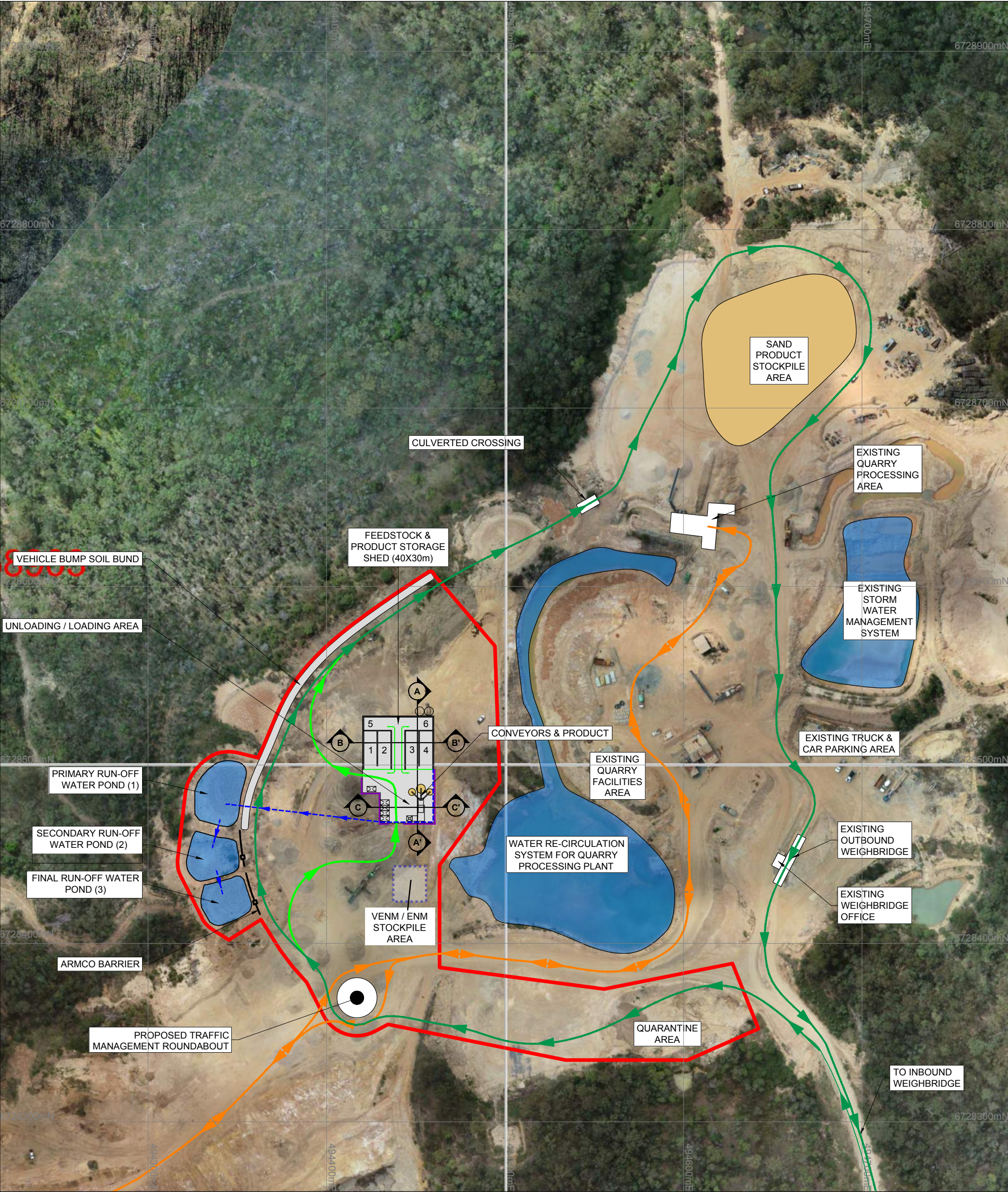
PROPOSED INBOUND WEIGHBRIDGE PLAN
SCALE 1:200




SECTION THROUGH PROPOSED INBOUND WEIGHBRIDGE
SCALE 1:200





CLIENT: **THORLEY QUARRY PRODUCTS**
SITE: **THORLEY SANDS QUARRY**
TITLE: **PROPOSED INBOUND WEIGHBRIDGE**
DATE: **06.09.2021** SCALE: **1:200** PAPERSIZE: **A3** DWG: **FIGURE 8**
THIS DRAWING AND ITS CONTENTS ARE CONFIDENTIAL, ARE SUBJECT TO RETURN ON DEMAND AND MAY NOT BE COPIED OR DISCLOSED TO ANY THIRD PARTY OR USED DIRECTLY OR INDIRECTLY FOR ANY OTHER PURPOSE THAN AS EXPRESSLY DETERMINED IN WRITING BY INSITU ADVISORY PTY LTD.





LEGEND


**EXTENT OF PROPOSED DEVELOPMENT**


**QUARRY VEHICLE ROUTE**

**ONE WAY VEHICLE FLOW DIRECTION FOR QUARRY & RRF VEHICLES**

**EXTENT OF CONCRETE SURFACING (AREA = 2230m2 APPROX)**

**RRF TRAFFIC ACCESS**

**KERB EDGING**

**SUB-SURFACE GREY WATER DRAINS**



CLIENT:

SITE:

TITLE:

DATE: 25.10.2021

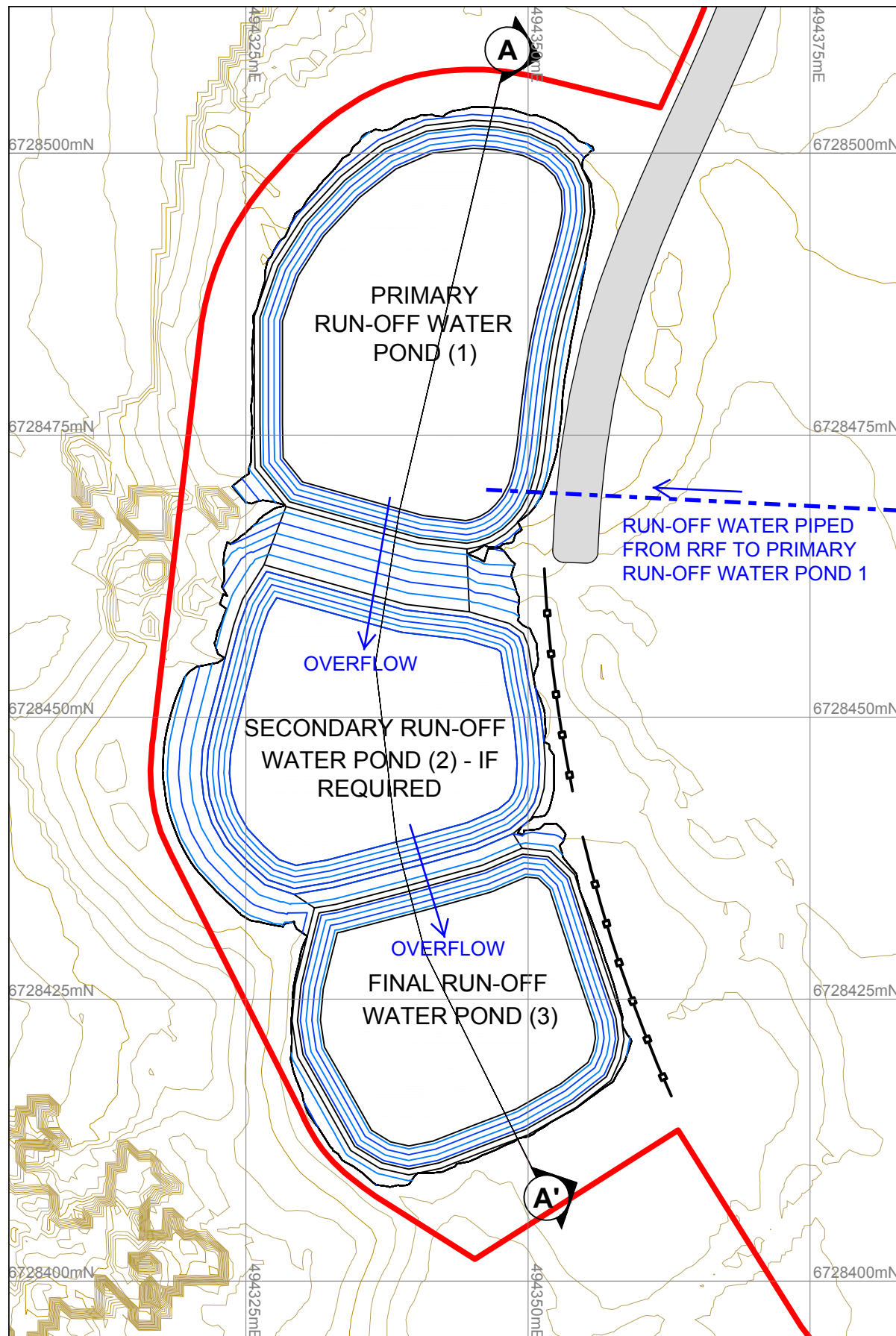
THORLEY QUARRY PRODUCTS

THORLEY SANDS QUARRY

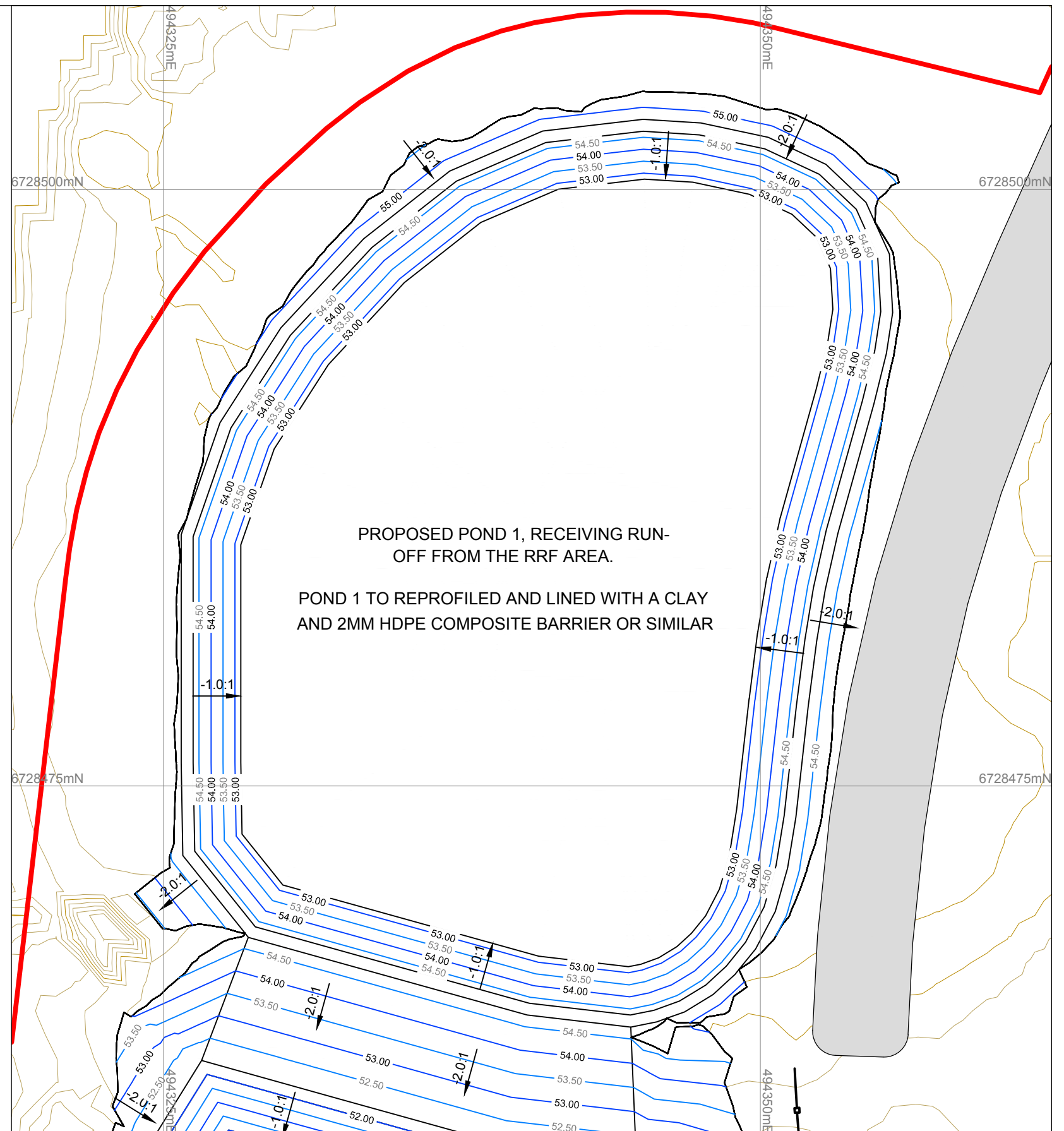
PROPOSED OPERATIONAL TRAFFIC FLOW

SCALE: 1:2000 PAPER SIZE: A3 DWG: **FIGURE 09**

THIS DRAWING AND ITS CONTENTS ARE CONFIDENTIAL, ARE SUBJECT TO RETURN ON DEMAND AND MAY NOT BE COPIED OR DISCLOSED TO ANY THIRD PARTY OR USED DIRECTLY OR INDIRECTLY FOR ANY OTHER PURPOSE THAN AS EXPRESSLY DETERMINED IN WRITING BY INSITU ADVISORY PTY LTD.



PLAN SHOWING RUN-OFF WATER POND LAYOUT
SCALE 1:500



RUN-OFF WATER STORAGE POND 1 DETAIL
SCALE 1:200



LEGEND

- EXTENT OF PROPOSED DEVELOPMENT
- EXISTING TOPOGRAPHIC SURVEY LEVEL CONTOURS

- PROPOSED POND LEVEL CONTOURS

VOLUMES & AREAS

MAXIMUM WATER LEVEL = 54.75m RL
PLAN AREA = 828m²

CLIENT:

THORLEY QUARRY PRODUCTS

SITE:

THORLEY SANDS QUARRY

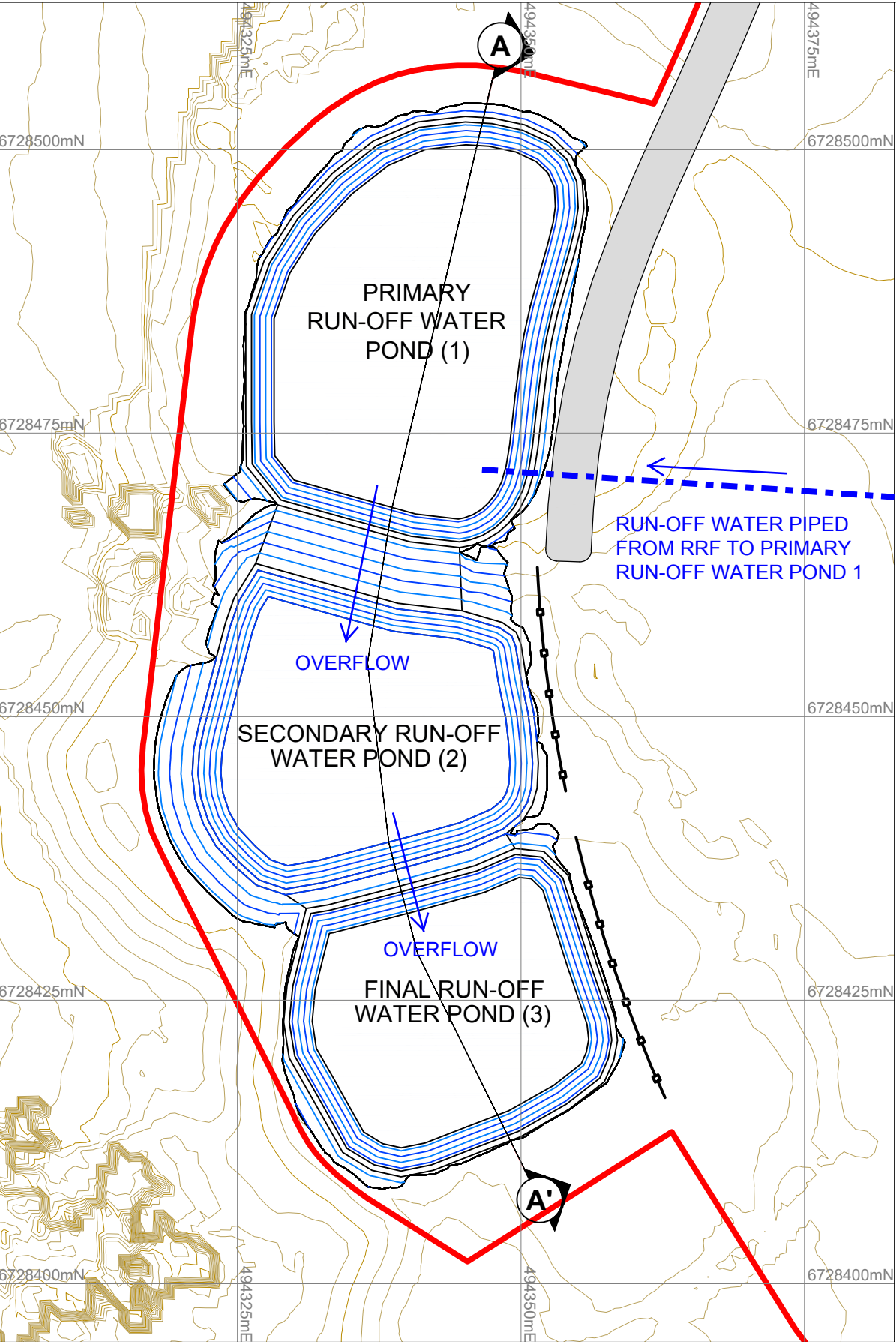
TITLE:

PROPOSED RUN-OFF WATER POND 1 LAYOUT

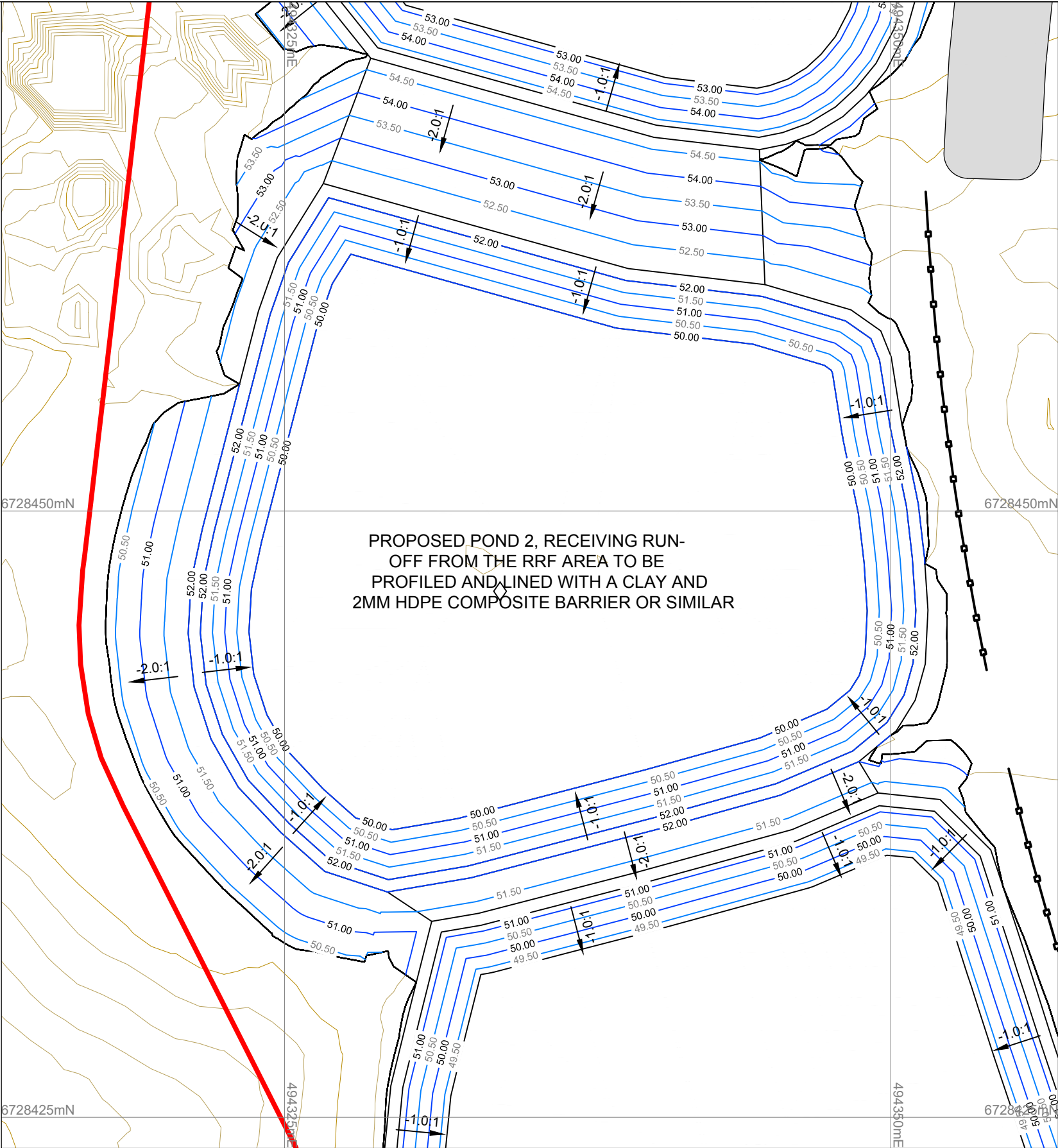
DATE: 26.08.2021

SCALE: SHOWN PAPERSIZE: A3 DWG: FIGURE 10

THIS DRAWING AND ITS CONTENTS ARE CONFIDENTIAL, ARE SUBJECT TO RETURN ON DEMAND AND MAY NOT BE COPIED OR DISCLOSED TO ANY THIRD PARTY OR USED DIRECTLY OR INDIRECTLY FOR ANY OTHER PURPOSE THAN AS EXPRESSLY DETERMINED IN WRITING BY INSITU ADVISORY PTY LTD.



PLAN SHOWING RUN-OFF WATER POND LAYOUT
SCALE 1:500



RUN-OFF WATER STORAGE POND 2 DETAIL
SCALE 1:200



LEGEND

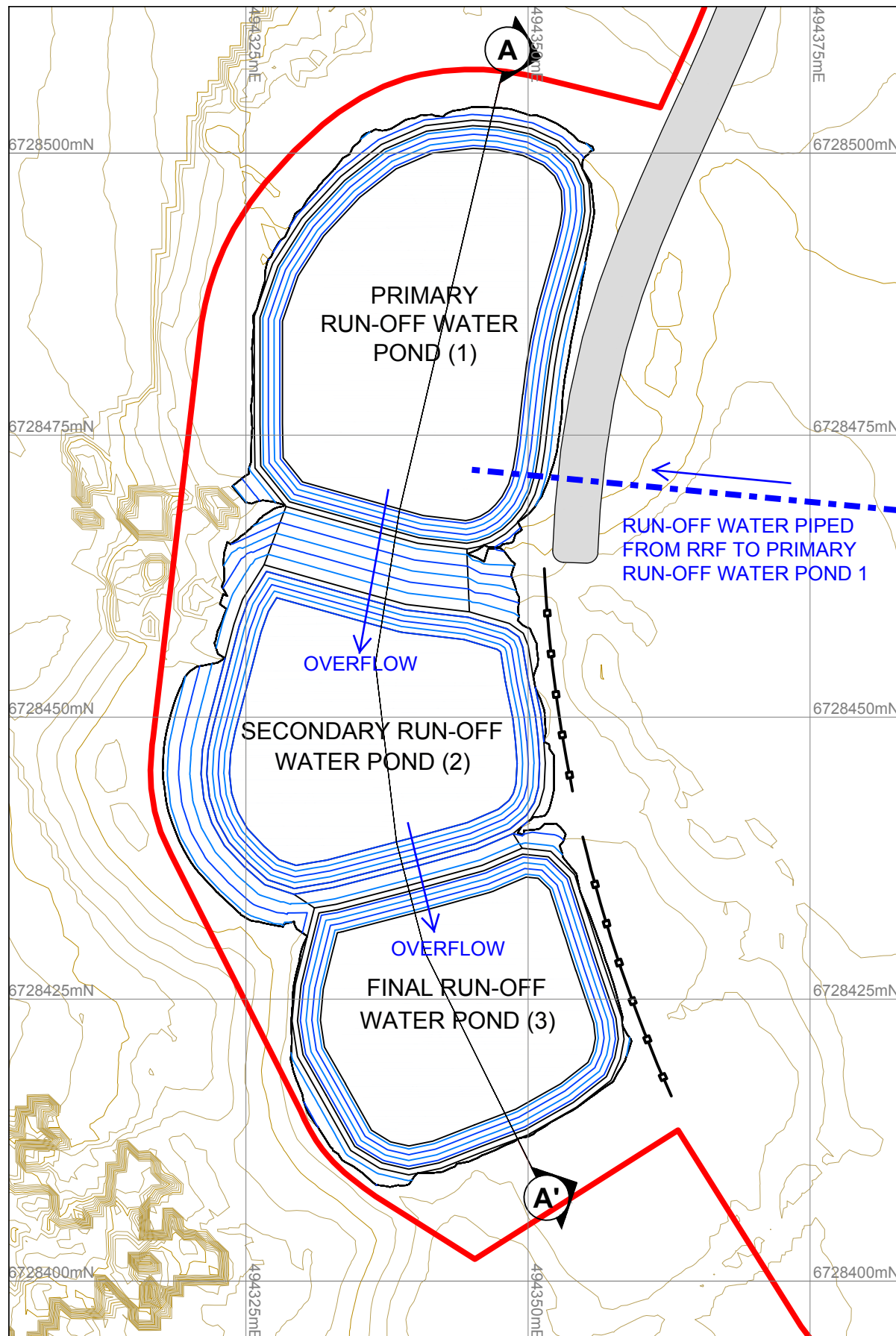
- EXTENT OF PROPOSED DEVELOPMENT
- PROPOSED POND LEVEL CONTOURS
- EXISTING TOPOGRAPHIC SURVEY LEVEL CONTOURS

- PROPOSED POND LEVEL CONTOURS

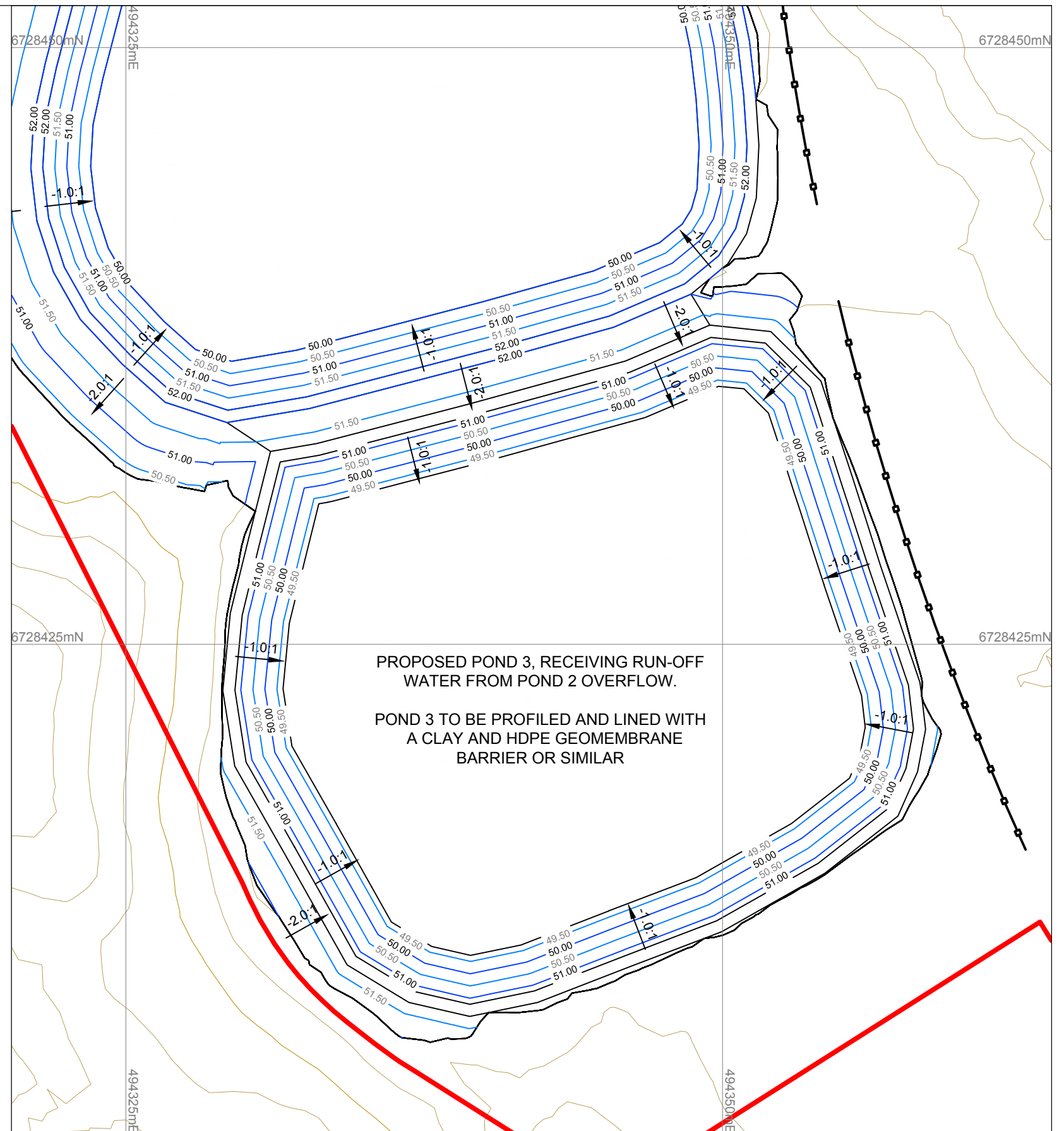
VOLUMES & AREAS

MAXIMUM WATER LEVEL = 52.00m RL
PLAN AREA = 629m²

CLIENT: **THORLEY QUARRY PRODUCTS**
SITE: **THORLEY SANDS QUARRY**
TITLE: **PROPOSED RUN-OFF WATER POND 2 LAYOUT**
DATE: **26.08.2021** SCALE: **SHOWN** PAPERSIZE: **A3** DWG: **FIGURE 11**
THIS DRAWING AND ITS CONTENTS ARE CONFIDENTIAL, ARE SUBJECT TO RETURN ON DEMAND AND MAY NOT BE COPIED OR DISCLOSED TO ANY THIRD PARTY OR USED DIRECTLY OR INDIRECTLY FOR ANY OTHER PURPOSE THAN AS EXPRESSLY DETERMINED IN WRITING BY INSITU ADVISORY PTY LTD.



PLAN SHOWING RUN-OFF WATER POND LAYOUT
SCALE 1:500



RUN-OFF WATER STORAGE POND 3 DETAIL
SCALE 1:200



LEGEND

- EXTENT OF PROPOSED DEVELOPMENT
- EXISTING TOPOGRAPHIC SURVEY LEVEL CONTOURS

- PROPOSED POND LEVEL CONTOURS

VOLUMES & AREAS

MAXIMUM WATER LEVEL = 51.25m RL
PLAN AREA = 580m²

CLIENT:

THORLEY QUARRY PRODUCTS

SITE:

THORLEY SANDS QUARRY

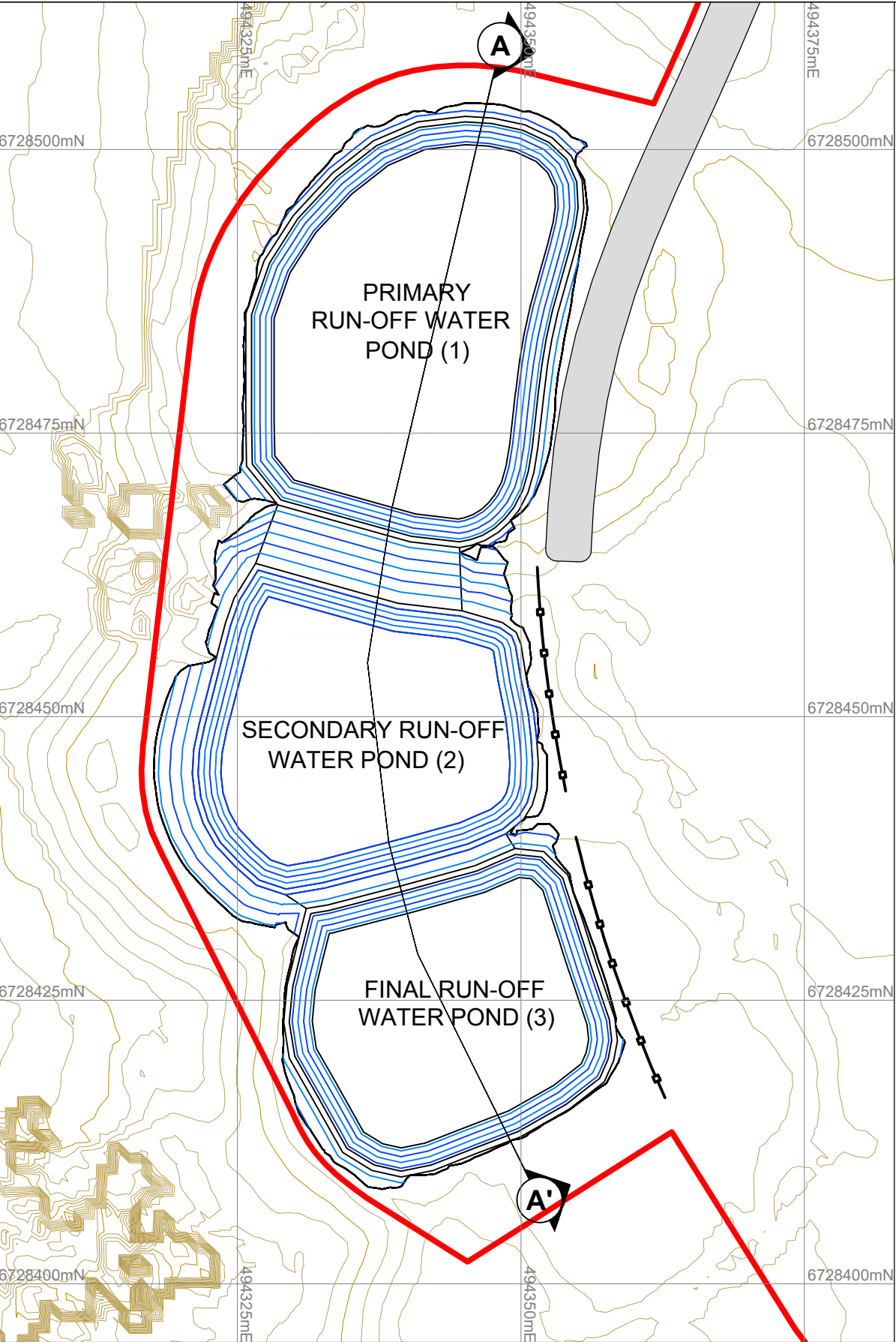
TITLE:

PROPOSED RUN-OFF WATER POND 3 LAYOUT

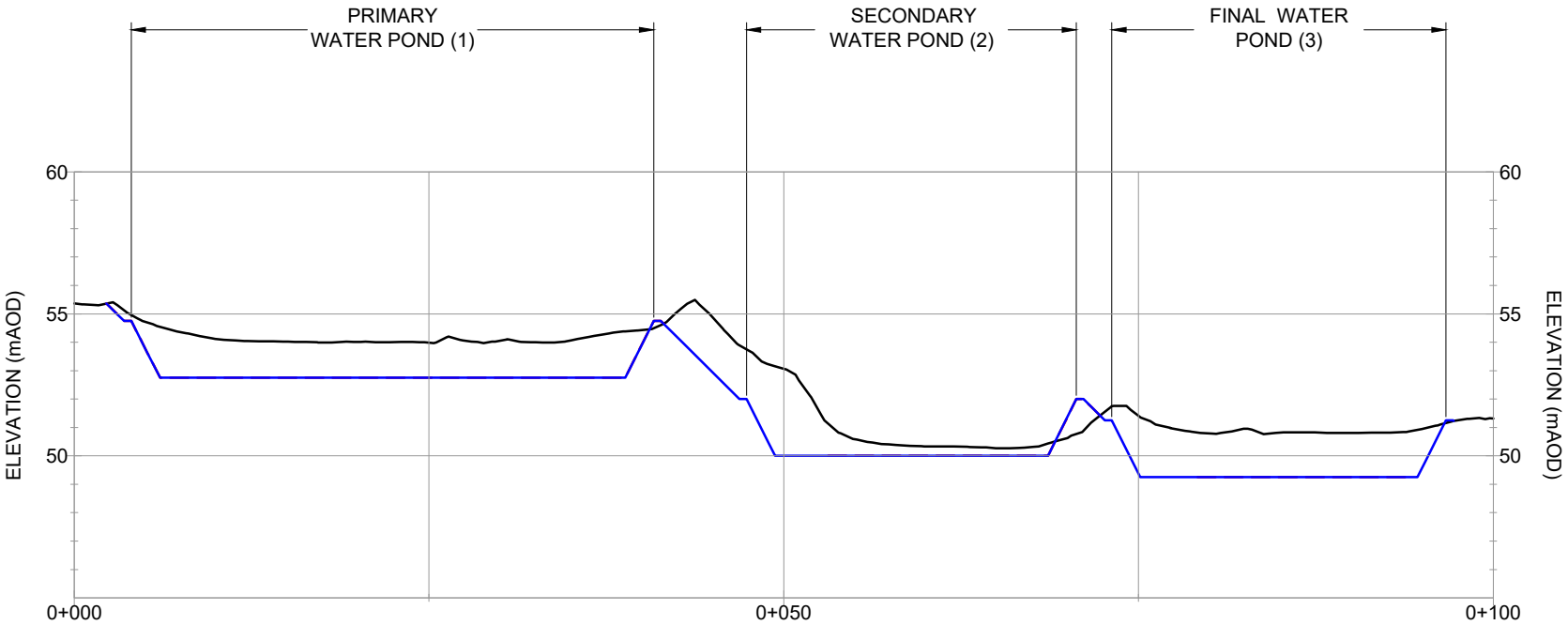
DATE: **26.08.2021**

SCALE: **SHOWN** PAPERSIZE: **A3** DWG: **FIGURE 12**

THIS DRAWING AND ITS CONTENTS ARE CONFIDENTIAL, ARE SUBJECT TO RETURN ON DEMAND AND MAY NOT BE COPIED OR DISCLOSED TO ANY THIRD PARTY OR USED DIRECTLY OR INDIRECTLY FOR ANY OTHER PURPOSE THAN AS EXPRESSLY DETERMINED IN WRITING BY INSITU ADVISORY PTY LTD.



PLAN SHOWING RUN-OFF WATER POND LAYOUT
SCALE 1:500



SECTION A - A' THROUGH RUN-OFF WATER PONDS
HORIZONTAL SCALE 1:500
VERTICAL SCALE 1:250

RUN-OFF PONDS TO HAVE A COMBINED MAXIMUM STORAGE CAPACITY OF 4ML



LEGEND



EXTENT OF PROPOSED DEVELOPMENT



EXISTING TOPOGRAPHIC SURVEY LEVEL CONTOURS



EXISTING TOPOGRAPHIC SURVEY LEVEL PROFILE



PROPOSED RUN-OFF WATER POND CONCEPT DESIGN CONTOURS

CLIENT:

THORLEY QUARRY PRODUCTS

SITE:

**THORLEY SANDS QUARRY
PROPOSED RUN-OFF WATER PONDS - CROSS
SECTION DETAIL**

TITLE:

DATE: **26.08.2021**

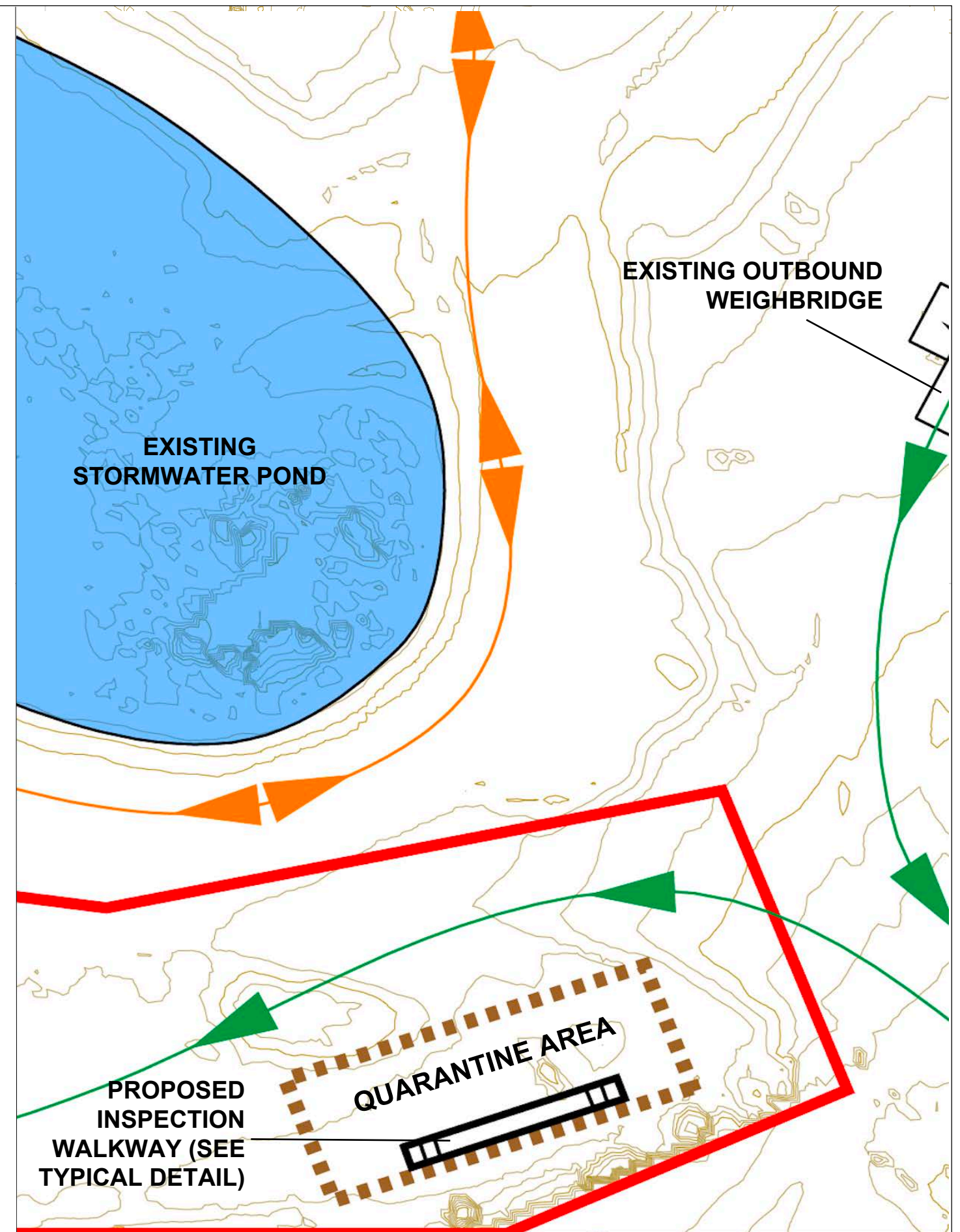
SCALE: **SHOWN** PAPERSIZE: **A3** DWG: **FIGURE 13**

THIS DRAWING AND ITS CONTENTS ARE CONFIDENTIAL, ARE SUBJECT TO RETURN ON DEMAND AND MAY NOT BE COPIED OR DISCLOSED TO ANY THIRD PARTY OR USED DIRECTLY OR INDIRECTLY FOR ANY OTHER PURPOSE THAN AS EXPRESSLY DETERMINED IN WRITING BY INSITU ADVISORY PTY LTD.

TYPICAL VEHICLE INSPECTION WALKWAY



Image courtesy of OEM Group



LEGEND



EXTENT OF PROPOSED DEVELOPMENT



QUARRY VEHICLE ROUTE



ONE WAY VEHICLE FLOW DIRECTION FOR QUARRY & RRF VEHICLES

CLIENT:

THORLEY QUARRY PRODUCTS

SITE:

THORLEY SANDS QUARRY

TITLE:

PROPOSED QUARANTINE AREA LAYOUT

DATE: 15.07.2021

SCALE: NTS

PAPERSIZE: A3

DWG: FIGURE 14

THIS DRAWING AND ITS CONTENTS ARE CONFIDENTIAL, ARE SUBJECT TO RETURN ON DEMAND AND MAY NOT BE COPIED OR DISCLOSED TO ANY THIRD PARTY OR USED DIRECTLY OR INDIRECTLY FOR ANY OTHER PURPOSE THAN AS EXPRESSLY DETERMINED IN WRITING BY INSITU ADVISORY PTY LTD.